

70443 OCTOPUS MARGINATUS



type
T122S

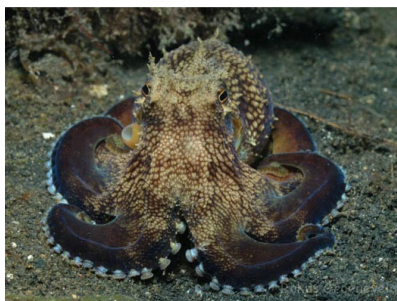
dimensions
58-19-145

lovingly handcrafted
limited edition 100 pcs

material

front and temple tips genuine
cellulose acetate, 8mm.
hinge components pure titanium.
surface polished.

UV400 australian standard
anti-reflection coated PA-lenses.



this medium sized cephalopod displays a very unusual behaviour. not many animals can be observed using tools for specific tasks. the coconut octopus is one of them, it collects seashells and coconut halves discarded by humans in order to build a shelter.

it actually collects these shells 'for future use', like some researchers observed. they appear to be able to collect the right building material, select and reassemble it into a protective sphere. but they also carry the shells around, wrapping their arms around the halves. although an octopus could flee by propulsing itself away, where could it flee to on a open seafloor without protection?

it is obvious, the shells slow down the octopus considerably, because he carries them around, but they form an instant protective shelter when needed.

